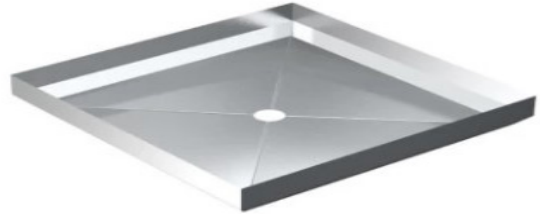


S SERIES FABRICATED STAINLESS STEEL SHOWER TRAY

The Acero S Series Fabricated Stainless Steel Shower Tray is an attractive, simple to install shower tray system especially designed to offer a robust water tight system which can be incorporated with a variety of shower wall systems to suit.

The System is designed and manufactured in New Zealand and is fabricated from high quality 0.9mm, polished 304 stainless steel.

Acero S Series Shower trays are supplied standard with a 40mm waste hole but a 90mm waste hole is available on request. The unit can also be supplied with Esi-Clean Traps which are welded in place as part of the shower tray unit. This eliminates the need for fitting on site and the reliance on sealants. The Esi-Clean traps are available in both bottom exit and side exit to suit most situations.



The unit is supplied standard with a loose polystyrene base but a pinex timber base is available on request. A threshold step is also available as an optional extra.

Please see the Ordering Guide Tab to view the product codes for the different configurations available.

Model	Code (40mm)	A (mm)	B (mm)	C (mm*)	D (mm*)	Depth
S5	BP151006	925	775	462	387	100
S7	BP151012	925	775	150	150	100
S9	BP151018	925	775	150	150	100
S11	BP151024	925	925	462	462	100
S13	BP151030	925	925	150	150	100

SPECIFICATIONS

Overall Size: 925 x 775 x 100mm

Material: Stainless Steel

FEATURES

Standard 40mm waste hole. 90mm waste hole and/or Easyclean waste available on request.

Standard loose polystyrene base. Pinex timber base available on request (centre waste only).

ASSOCIATED PRODUCTS



PTDSS1
Paper Towel
Dispenser



SDSS01
Sensor
Liquid Soap
Dispenser



WMSS1
Stainless
Steel Wall
Mirror